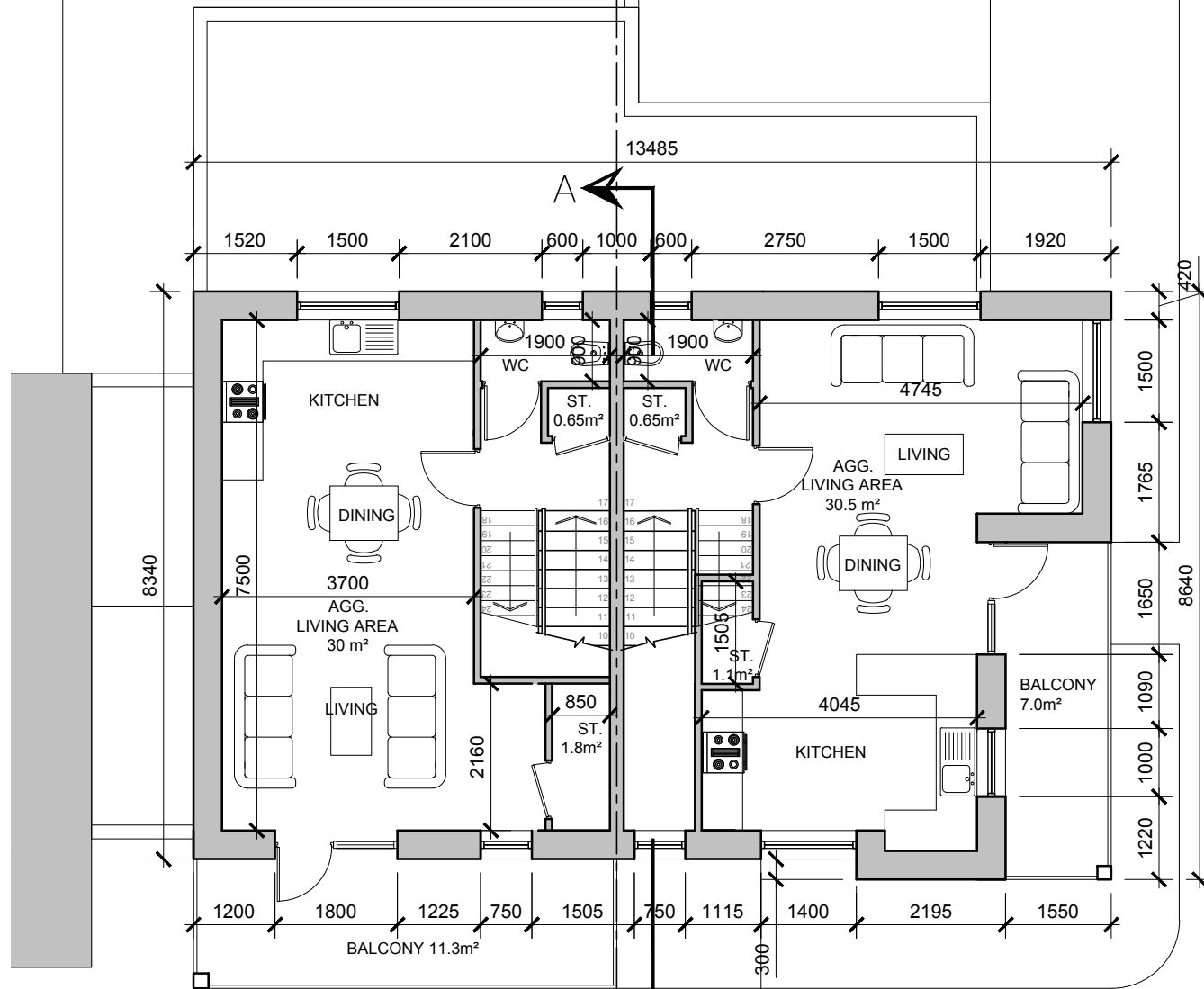


**Duplex Apartment 3 (F.F) AREA: 85.6 SQ.M.**  
 921 SQ.FT.

**Duplex Apartment 4 (F.F) AREA: 85.2 SQ.M.**  
 917 SQ.FT.

STORAGE tot. - 7.15 sq.m

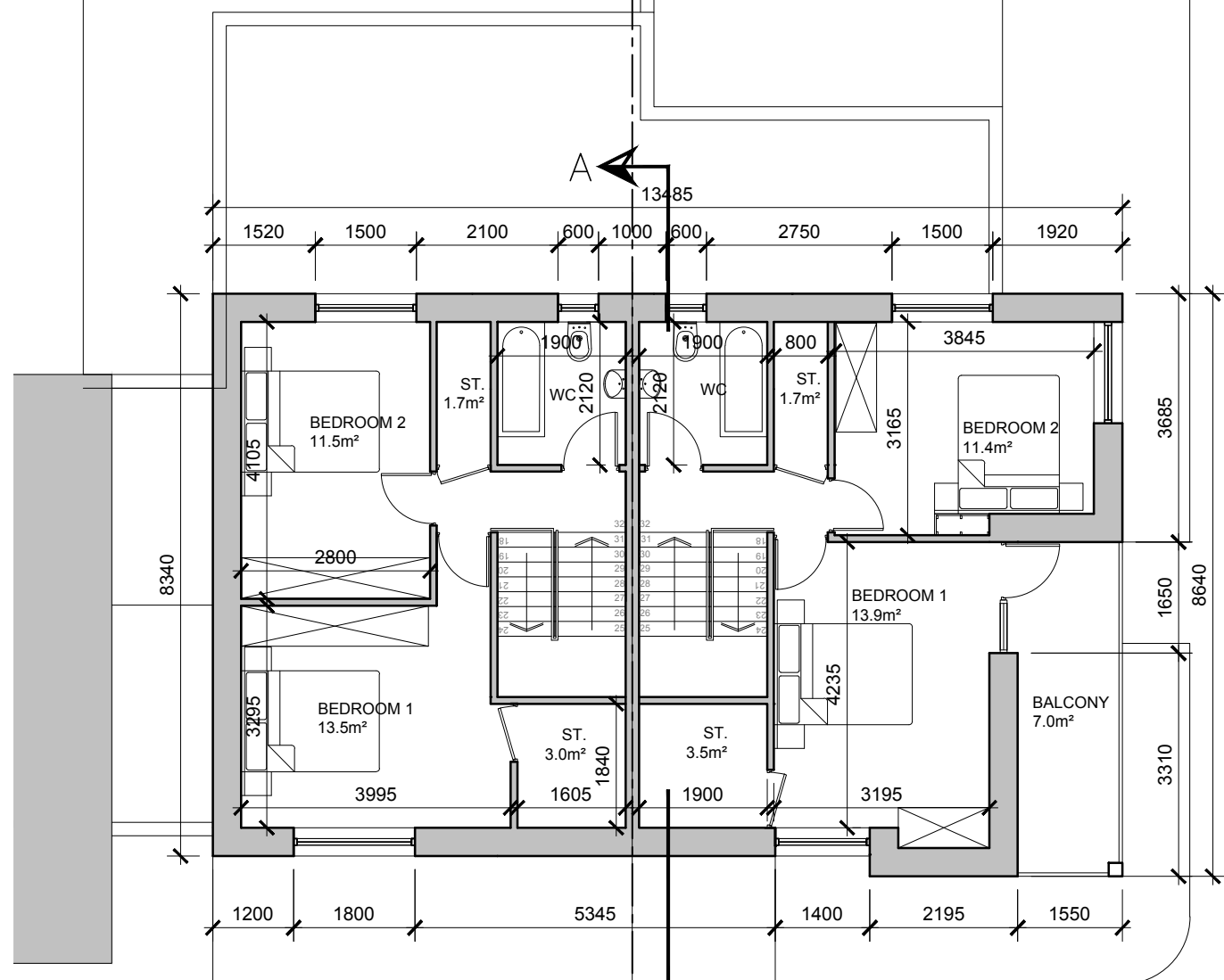
STORAGE tot. - 7.0 sq.m



**FIRST FLOOR PLAN**  
 SCALE 1:100 @ A3  
 APARTMENT BLOCK F3.1/F3.2

**Duplex Apartment 3 (S.F)**

**Duplex Apartment 4 (S.F)**



**SECOND FLOOR PLAN**  
 SCALE 1:100 @ A3  
 APARTMENT BLOCK F3.1/F3.2

date	rev	name	chk	note
08.06.20	P1	LG	EJG	ISSUE FOR PLANNING



F3.1/F3.2_2 Bed Duplex Apartment 3	Proposed	Guidelines
Overall floor area	85.6 m <sup>2</sup>	73m <sup>2</sup>
Living/kitchen/dining area	30.0 m <sup>2</sup>	30m <sup>2</sup>
Living area width	3.7 m	3.6m
Bedroom areas	13.5m <sup>2</sup> + 11.5m <sup>2</sup> = 25m <sup>2</sup>	13m <sup>2</sup> + 11.4m <sup>2</sup> = 24.4m <sup>2</sup>
Storage area	7.15m <sup>2</sup>	6m <sup>2</sup>
Private amenity area	11.3m <sup>2</sup>	7m <sup>2</sup>

F3.1/F3.2_2 Bed Duplex Apartment 4	Proposed	Guidelines
Overall floor area	85.2 m <sup>2</sup>	73m <sup>2</sup>
Living/kitchen/dining area	30.5 m <sup>2</sup>	30m <sup>2</sup>
Living area width	4.7m	3.6m
Bedroom areas	13.9m <sup>2</sup> + 11.4m <sup>2</sup> = 25.3m <sup>2</sup>	13m <sup>2</sup> + 11.4m <sup>2</sup> = 24.4m <sup>2</sup>
Storage area	6.95m <sup>2</sup>	6m <sup>2</sup>
Private amenity area	14m <sup>2</sup>	7m <sup>2</sup>

Project	PROPOSED RESIDENTIAL DEVELOPMENT AT BANDUFF, CORK
---------	--

Drawing title	DUPLEX TYPE F3.1/F3.2 FIRST & SECOND FLOOR PLANS
---------------	---

Scale	1/100 @ A3	Drawn	MP	Checked	EJG	Date	10.12.19
-------	------------	-------	----	---------	-----	------	----------

Project No.	16217	Dwg. No.	16217/P/612	Revision	P1
-------------	-------	----------	-------------	----------	----

<input type="checkbox"/> Information \ Comments	<input type="checkbox"/> Tender
<input checked="" type="checkbox"/> Planning	<input type="checkbox"/> Construction