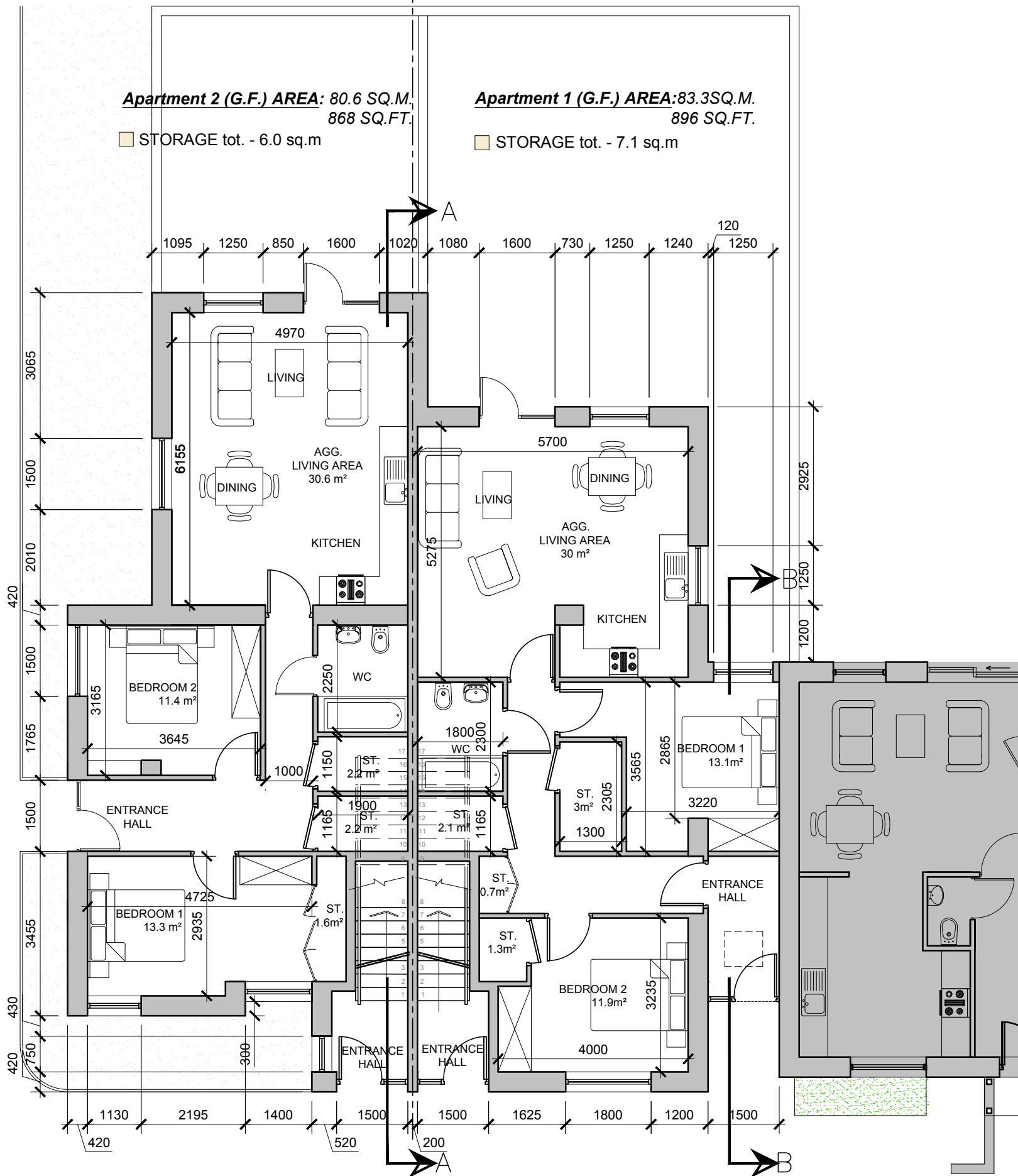


**APARTMENT BLOCK F2.1/F2.2**



**Apartment 2 (G.F.) AREA: 80.6 SQ.M,  
896 SQ.FT.**

STORAGE tot. - 6.0 sq.m

**Apartment 1 (G.F.) AREA: 83.3SQ.M,  
896 SQ.FT.**

STORAGE tot. - 7.1 sq.m

**GROUND FLOOR PLAN**  
 SCALE 1:100 @ A3  
 APARTMENT BLOCK F2.1/F2.2

**NOTE: POSITION OF NORTH POINT AND LEVELS  
 VARIES - CHECK SITE PLAN FOR ORIENTATION AND  
 F.F.L'S - DWG NO. 16217/P/003.**



**DUPLEX TYPE F2.1 -CHARACTER AREA 1**  
 SEE KEY PLAN 16217-P-004



**DUPLEX TYPE F2.2 -CHARACTER AREA 2**  
 SEE KEY PLAN 16217-P-004

F2.1/F2.2_2 Bed GF Apartment 1	Proposed	Guidelines
Overall floor area	83.3 m <sup>2</sup>	73m <sup>2</sup>
Living/kitchen/dining area	30 m <sup>2</sup>	30m <sup>2</sup>
Living area width	5.275 m	3.6m
Bedroom areas	13.1m <sup>2</sup> + 11.9m <sup>2</sup> = 25m <sup>2</sup>	13m <sup>2</sup> + 11.4m <sup>2</sup> = 24.4m <sup>2</sup>
Storage area	7.1 m <sup>2</sup>	6m <sup>2</sup>
Private amenity area	REFER TO HQA	

F2.1/F2.2_2 Bed GF Apartment 2	Proposed	Guidelines
Overall floor area	80.6 m <sup>2</sup>	73m <sup>2</sup>
Living/kitchen/dining area	30.6 m <sup>2</sup>	30m <sup>2</sup>
Living area width	4.97 m	3.6m
Bedroom areas	11.4m <sup>2</sup> + 13.3= 24.7m <sup>2</sup>	13m <sup>2</sup> + 11.4m <sup>2</sup> = 24.4m <sup>2</sup>
Storage area	6m <sup>2</sup>	6m <sup>2</sup>
Private amenity area	REFER TO HQA	

date	rev	name	chk	note
08.06.20	P1	LG	EJG	ISSUE FOR PLANNING



Project	PROPOSED RESIDENTIAL DEVELOPMENT AT BANDUFF, CORK
---------	--

Drawing title DUPLEX TYPE F2.1/F2.2 GROUND FLOOR PLANS & 3D RENDERS			
Scale 1/100 @ A3	Drawn VB	Checked EJG	Date 06.02.18
Project No. 16217	Dwg. No. 16217/P/006	Revision P1	
<input type="checkbox"/> Information \ Comments			Tender <input type="checkbox"/>
<input checked="" type="checkbox"/> Planning			Construction <input type="checkbox"/>