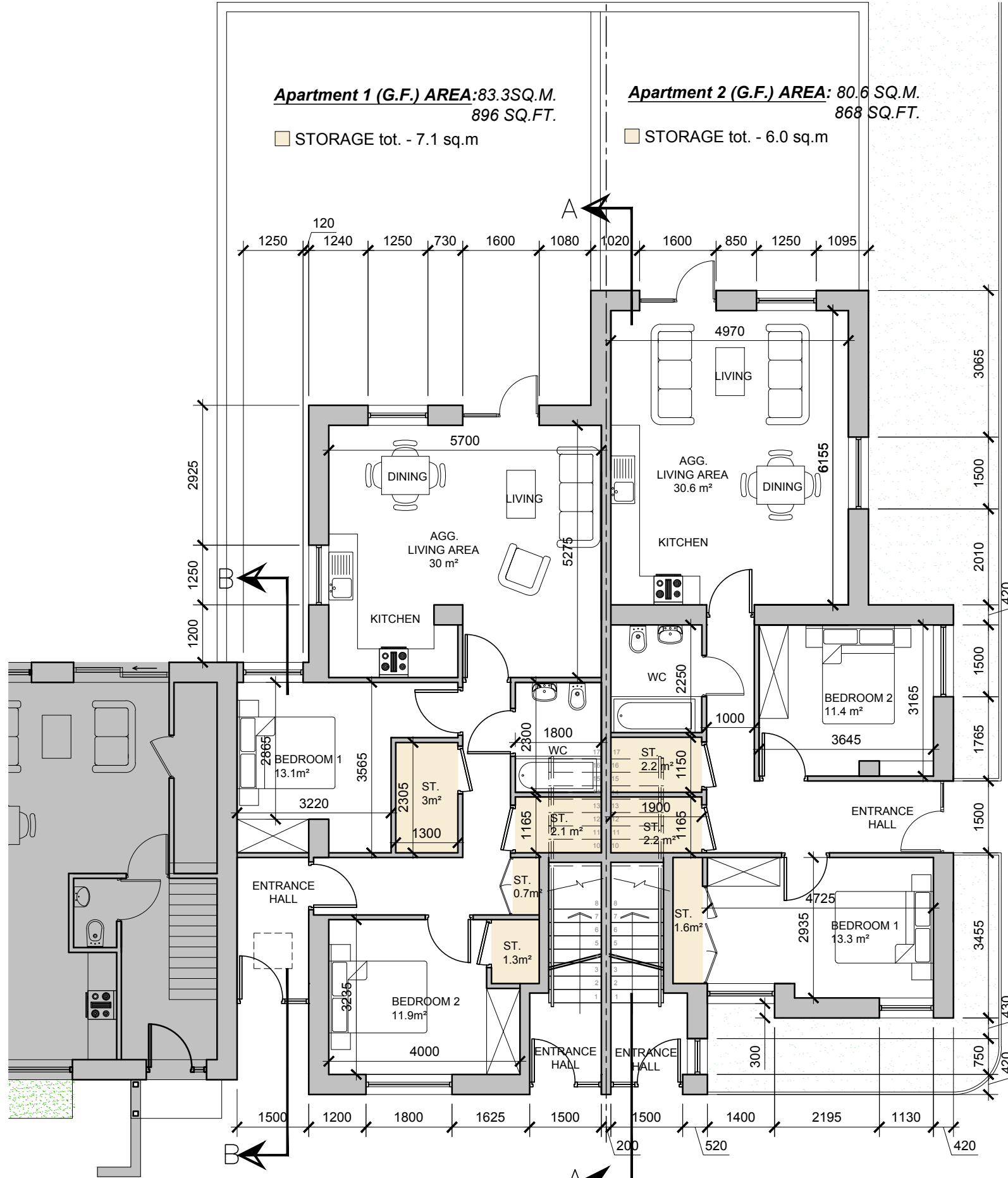


DO NOT SCALE. WORK TO FIGURED DIMENSIONS ONLY.
 ALL EXISTING DIMENSIONS TO BE CHECKED ON SITE.
 DRAWN ON AUTOCAD R2004 AT DEADY GAHAN ARCHITECTS LTD
 LAYERS ON THIS DRAWING COMPLY WITH BS 1192: PART 5

APARTMENT BLOCK F1.1/F1.2

Apartment 1 (G.F.) AREA: 83.3 SQ.M.
 896 SQ.FT.
 STORAGE tot. - 7.1 sq.m

Apartment 2 (G.F.) AREA: 80.6 SQ.M.
 868 SQ.FT.
 STORAGE tot. - 6.0 sq.m



GROUND FLOOR PLAN
 SCALE 1:100 @ A3
 APARTMENT BLOCK F1.1/F1.2

NOTE: POSITION OF NORTH POINT AND LEVELS VARIES - CHECK SITE PLAN FOR ORIENTATION AND F.F.L'S - DWG NO. 16217/P/003.



F-1_2 Bed GF Apartment 1	Proposed	Guidelines
Overall floor area	83.3 m ²	73m ²
Living/kitchen/dining area	30 m ²	30m ²
Living area width	5.275 m	3.6m
Bedroom areas	13.1m ² + 11.9m ² = 25m ²	13m ² + 11.4m ² = 24.4m ²
Storage area	7.1 m ²	6m ²
Private amenity area	REFER TO HQA	

F-1_2 Bed GF Apartment 2	Proposed	Guidelines
Overall floor area	80.6 m ²	73m ²
Living/kitchen/dining area	30.6 m ²	30m ²
Living area width	4.97 m	3.6m
Bedroom areas	11.4m ² + 13.4m ² = 24.8m ²	13m ² + 11.4m ² = 24.4m ²
Storage area	6m ²	6m ²
Private amenity area	REFER TO HQA	

date	rev	name	chk	note
08.06.20	P1	LG	EJG	ISSUE FOR PLANNING



Project
 PROPOSED RESIDENTIAL DEVELOPMENT
 AT BANDUFF, CORK

Drawing title			
DUPLEX TYPE F1.1/F1.2			
GROUND FLOOR PLANS & 3D RENDERERS			
Scale	Drawn	Checked	Date
1/100 @ A3	VB	EJG	06.02.18
Project No.	Dwg. No.	Revision	
16217	16217/P/001	P1	

<input type="checkbox"/> Information \ Comments	Tender
<input checked="" type="checkbox"/> Planning	Construction