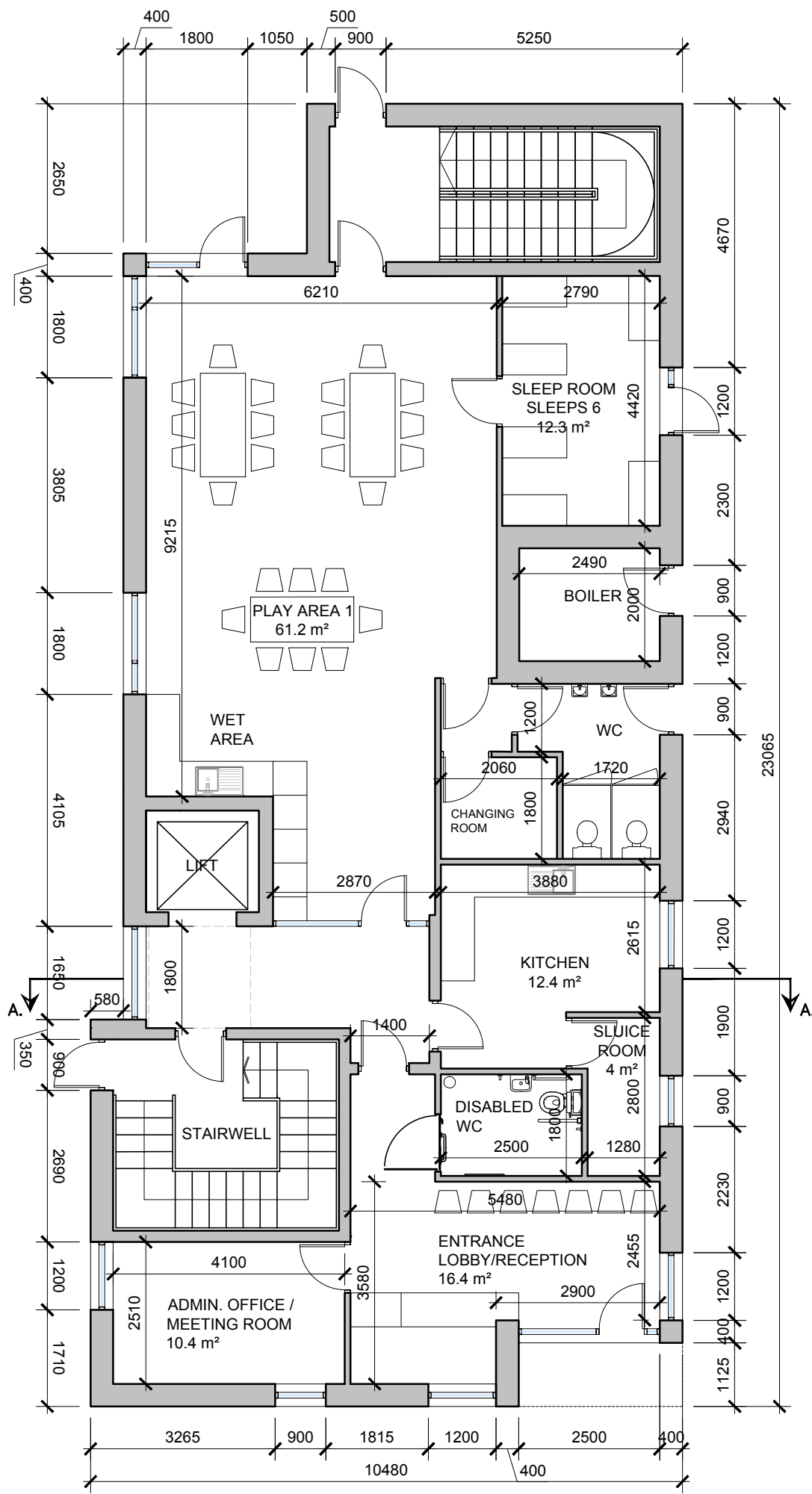
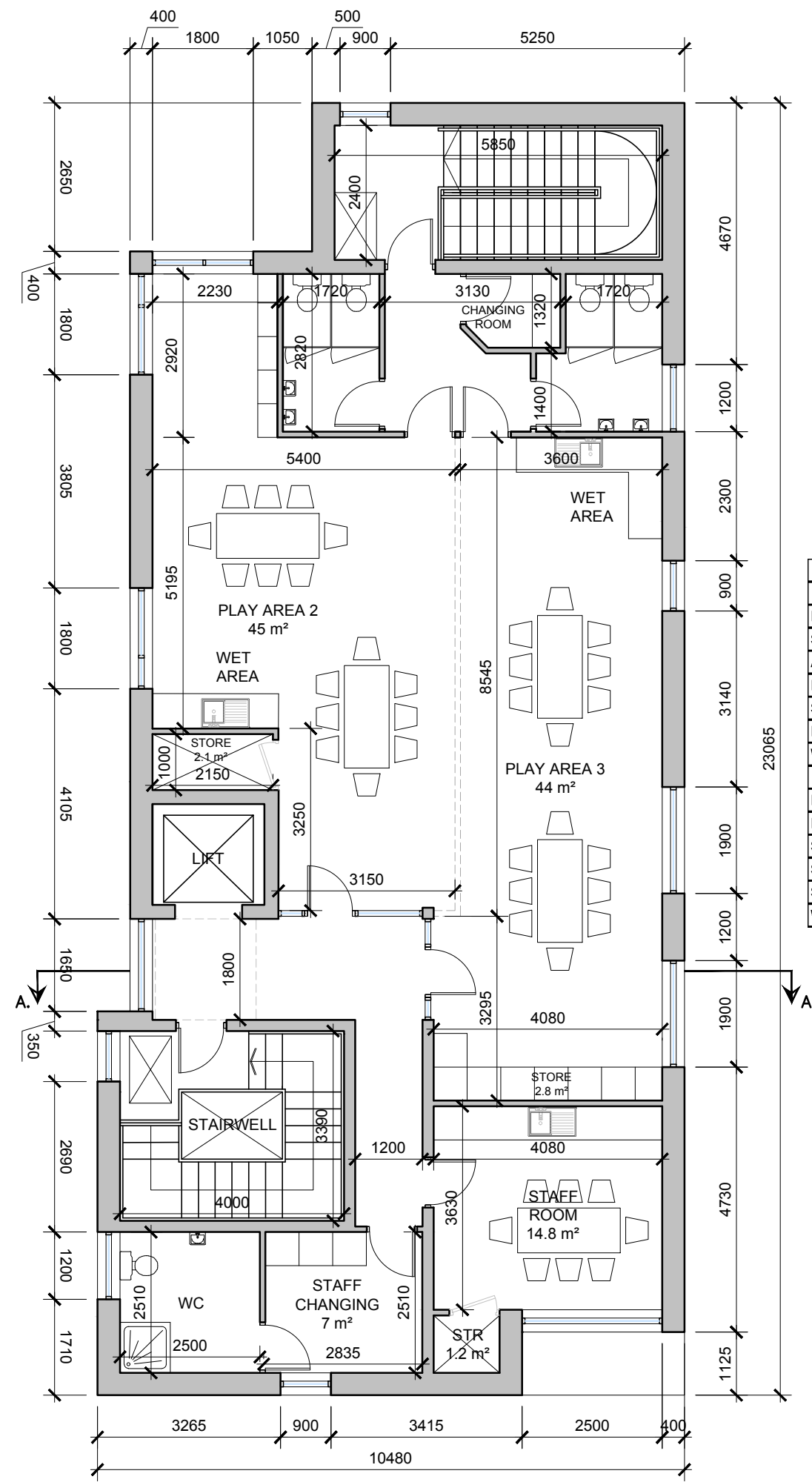


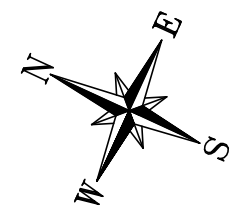
DO NOT SCALE. WORK TO FIGURED DIMENSIONS ONLY.  
 ALL EXISTING DIMENSIONS TO BE CHECKED ON SITE.  
 DRAWN ON AUTOCAD R2004 AT DEADY GAHAN ARCHITECTS LTD  
 LAYERS ON THIS DRAWING COMPLY WITH BS 1192: PART 5



**GROUND FLOOR PLAN**  
 SCALE 1:100



**FIRST FLOOR PLAN**  
 SCALE 1:100



CRÉCHE AREAS	
Ground Floor	
Play Area 01	61.2m <sup>2</sup>
Sleep Room	12.3m <sup>2</sup>
Adim Office/ Meeting Room	10.4m <sup>2</sup>
Kitchen	12.4m <sup>2</sup>
Sluice Room	4.0m <sup>2</sup>
Entrance Lobby/Reception	16.4m <sup>2</sup>
WC & Changing	12.0m <sup>2</sup>
First Floor	
Play Area 02	45.0m <sup>2</sup>
Play Area 03	44.0m <sup>2</sup>
Staff Room	14.8m <sup>2</sup>
Staff Changing	7.0m <sup>2</sup>
Storage Rooms	6.1m <sup>2</sup>
WC & Changing	19.0m <sup>2</sup>

**GROSS FLOOR AREA: 440.8 SQ.M.**  
 4744.7 SQ.FT.  
**GROSS INTERNAL AREA: 388.4 SQ.M.**  
 4180.7 SQ.FT.

date	rev	name	chk	note
08.06.20	P1	MOC	EJG	ISSUE FOR PLANNING



Project  
 PROPOSED RESIDENTIAL DEVELOPMENT  
 AT BANDUFF, CORK

Drawing title CRÉCHE FLOOR PLANS			
Scale 1:100 @ A3	Drawn MOC	Checked EJG	Date 13.03.20
Project No. 16217	Dwg. No. 16217/P/301	Revision P1	
Information / Comments		Tender	
Planning		Construction	